

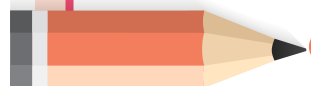

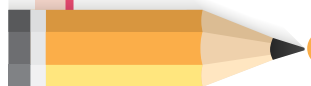







# AT A GLANCE

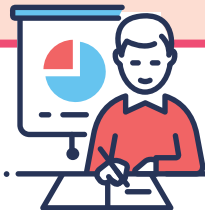
## 2024 State of Education



The *State of Education* report is intended to be a barometer of not only the key indicators of public school performance, such as standardized test scores and school finances, but also the timely challenges that public schools are facing and how they are coping with them. Data for the report comes from publicly available data sources and surveys of chief school administrators.

### TOP 5 challenges

-   **1** Student mental health
-   **2** Staffing shortages
-   **3** Budget pressures
-   **4** Academic challenges
-   **5** School facility issues



### Biggest staffing shortage areas

- 1 Substitute teachers
- 2 Instructional aides
- 3 Special education teachers
- 4 Transportation personnel
- 5 Regular education teachers

Open teaching positions at the start of the school year

50.4%

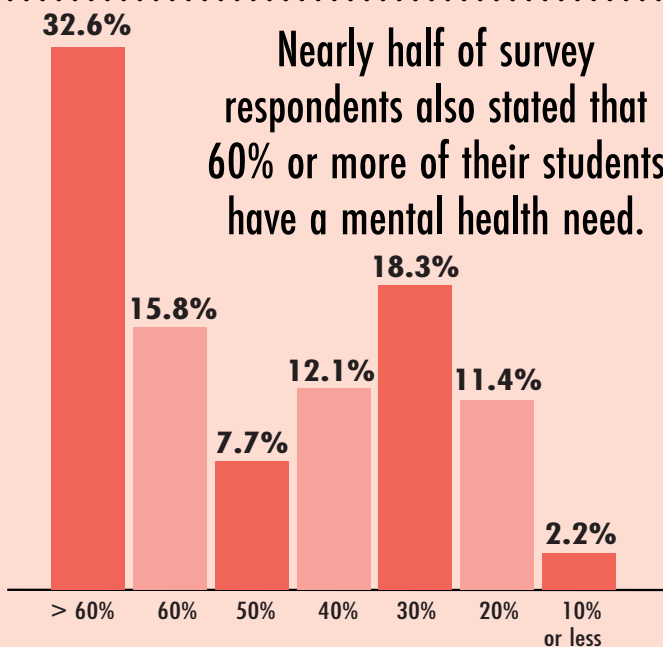


# Student Mental Health

**79%** of superintendents rated student mental health as one of their biggest instructional challenges



Nearly half of survey respondents also stated that 60% or more of their students have a mental health need.

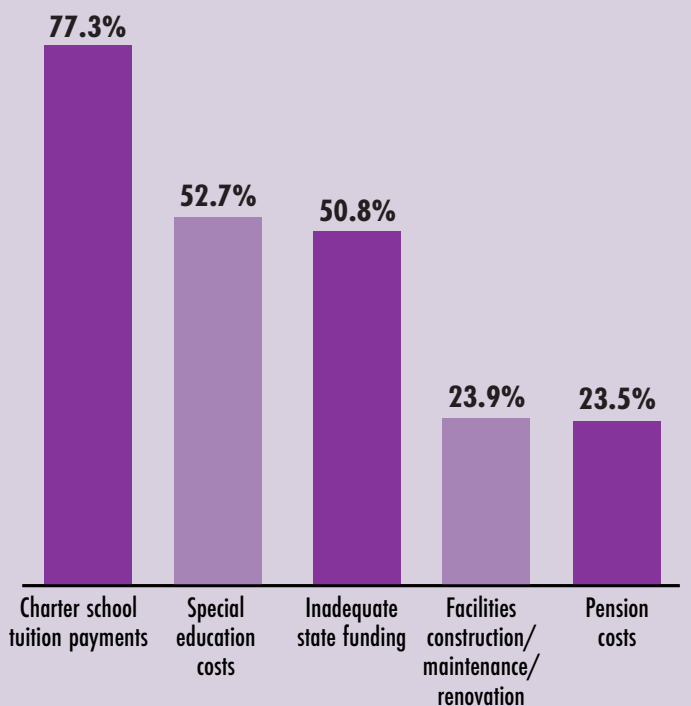
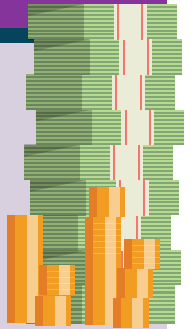


Biggest challenges connecting students with mental health services

- 82%** Scarcity of providers
- 56%** Reluctance to seek help
- 56%** Lack of funding
- 39%** Distance to provider
- 39%** Lack of awareness
- 26%** Difficulty partnering with agencies

# Mandated Expenses

Mandated expenses – those that school districts have very little, if any, control over – are the top sources of budget pressure and are driving increases in spending.



In the last decade, mandated pension, charter school and special education costs have surpassed revenues by nearly **\$4 billion**.

